

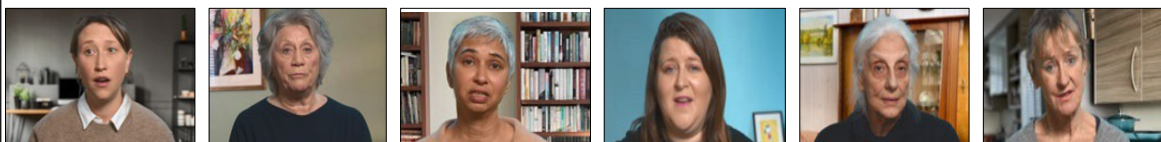


Have you ever said that? An interactive workshop

Designed by Professors Dame Lesley Fallowfield & Valerie Jenkins

Managing patients with metastatic breast cancer can be challenging. Dynamics within clinical settings are affected by a multitude of issues that can influence communication both positively and negatively. Pitching the dialogue correctly in terms of content or tone is not always easy. What one patient might view as empathic and reassuring, another may find patronising and less than candid. Health Care Professionals can experience quite powerful emotional reactions themselves; having built up relationships with their patients over several years, from primary to advanced disease means that they too may be affected by clinical outcomes and the messaging they relay.

In these highly interactive 6-hour workshops we explore via: - filmed clips of quotes from patients, group discussions and data presentations, patients' reactions to the conversations about issues such as diagnosis, prognosis and management options. We consider why some words and phrases help and why others are viewed as contradictory or unhelpful. [Click for link to draft agenda.](#)



2025 Dates and Locations

Thursday May 8 th	Academy of Medical Sciences, Portland Place, London
Thursday May 22 nd	Fitzrovia Hotel, London
Friday June 6 th	Queen's Hotel, Leeds
Monday June 23 rd	Clayton Hotel, Bristol
Thursday July 10 th	Hope Street Hotel, Liverpool

Workshops are **FREE** (including refreshments & lunch), suitable for all HCPs involved in care and management of patients with MBC/ABC and attract CPD points. To reserve your place a £50 deposit is required and refundable on attendance. To register or for further information email: adminshore-c@sussex.ac.uk or call 01273 873017

HEARSAY is funded by the Breast Cancer Research Foundation (BCRF)